

Your involvement matters!

Research shows that outcomes of residential are improved when:



Residential treatment is family-centered (throughout all phases of treatment) and family involvement is high



Residential treatment is trauma-informed, the length of stay is not extensive, and planning for aftercare begins as soon as possible following residential admission.



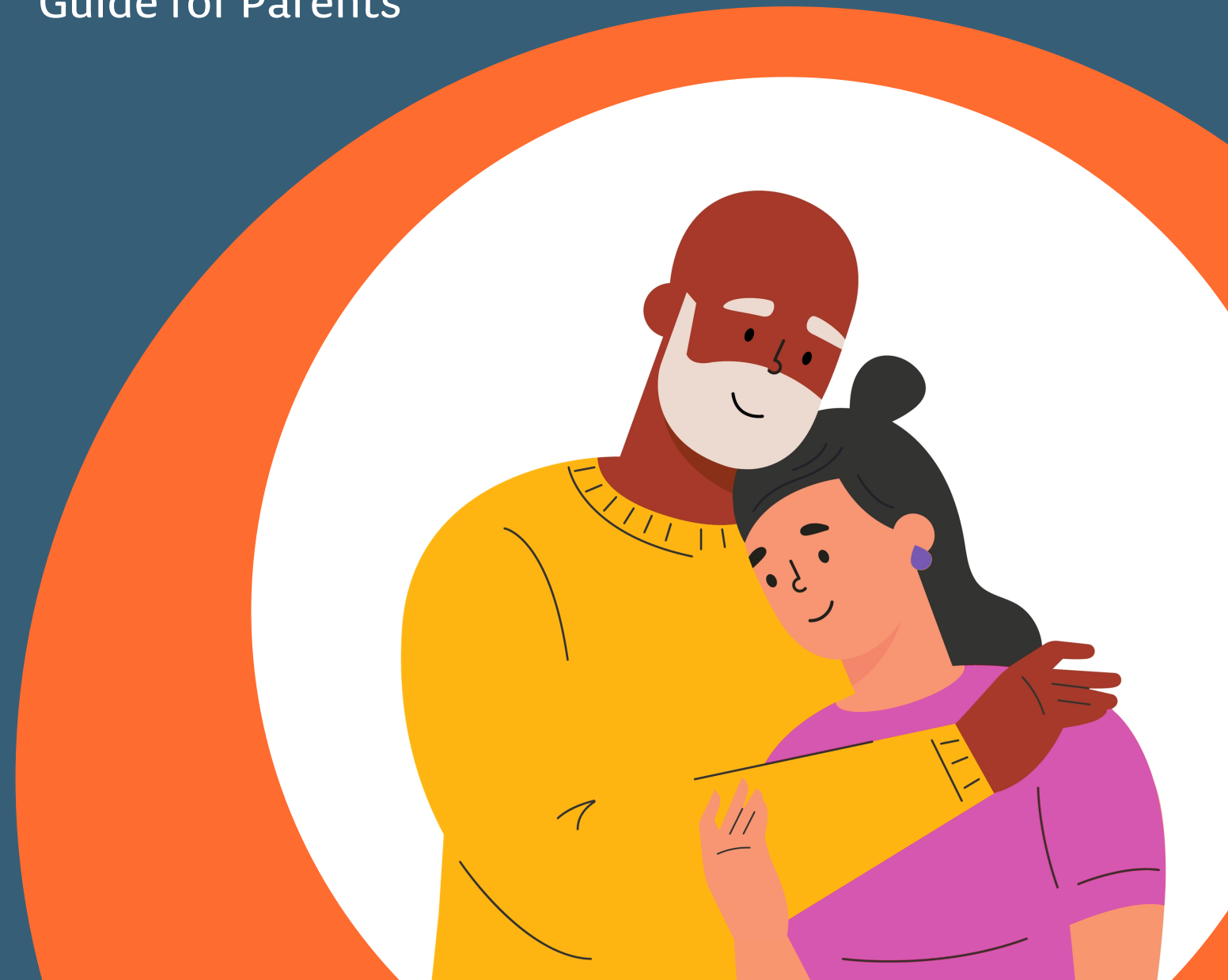
Child & family engages in aftercare services post-residential, and there is coordination among agencies providing aftercare

Voluntary Residential Services Oversight (VRSO)

Guide for Parents

How to stay involved

- Participate in medical appointments as frequently as possible
- Make phone calls with your child regularly
- Visit your child in residential and do off-grounds and home visits when recommended by team
- Participate in monthly team meetings with your Wraparound team
- Receive emails and phone calls about your child's treatment and progress
- Share your questions, concerns, and updates with the team





We are here to help

Your child is now receiving Children's Mental Health Initiative (CMHI) residential funding. This funding is designed for short-term residential placement with the goal of stabilization and reuniting with family.

Seeing your child go into residential treatment can be a scary and confusing process. We understand it can feel overwhelming—you don't know what to expect and are entrusting your child's care and treatment to others.

To help your child, family, and team navigate the process of residential treatment, a VRSO Clinician has been assigned. The VRSO Clinician is a licensed mental health professional who objectively advocates for your child and family.

The VRSO Clinician has experience working with residential programs and has partnered with residential facilities across the state.

What to expect



Advocacy



Communication



Support

What will VRSO do?

- Advocate for your child's needs in residential treatment and encourage their treatment to be individualized
- Support the team by attending all team meetings, meeting with your child, reviewing all reports, and being an active, collaborative team member
- Ensure you are receiving all the information about your child in residential care
- Communicate between the residential facility and family – making sure your family feels connected to the treatment process
- Partner with Wraparound to help prepare your child and family for transitioning home
- Ensure there is discharge planning that includes identifying community based and aftercare services.